



DIAMOND®



Diamond Specialty Lubricated chains are intended for applications where regular lubrication is not possible or practical.

DURALUBE® LIVE CHAIN

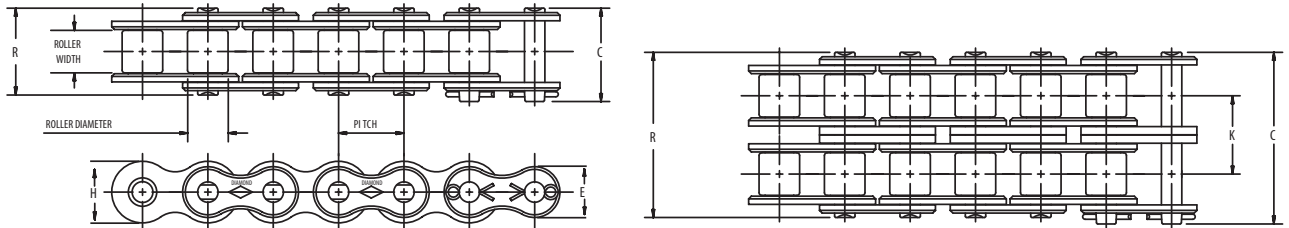
Diamond Chain's DURALUBE LIVE is the next generation solution in self-lubricating maintenance free roller chains. Available in two product configurations, a standard version with Diamond's proprietary lubricant and a food grade version with Diamond ACE plated components, the new DURALUBE LIVE delivers performance.

Dimensions in Inches

ASME/ANSI Number	Pitch Inches	Roller Width	Roller Diameter	Pin Diameter	Link Plate Thickness	C	R	K	Pounds Per Foot	Average Tensile Strength	E*	H*
40	1/2	5/16	.312	.156	.060	0.72	0.67	0.41	3300	0.410	0.475
50	5/8	3/8	.400	.200	.080	0.89	0.83	0.70	5200	0.512	0.594
60	3/4	1/2	.469	.234	.094	1.11	1.04	0.99	7400	0.615	0.713
80	1	5/8	.625	.312	.125	1.44	1.32	1.73	13000	0.820	0.950

DURALUBE® CHAIN

Diamond DURALUBE series chains are specifically intended for applications in which regular lubrication is impractical. DURALUBE series chains feature a one-piece powdered metal bushing and roller combination lubricated under vacuum providing supplemental lubrication between regularly scheduled maintenance.



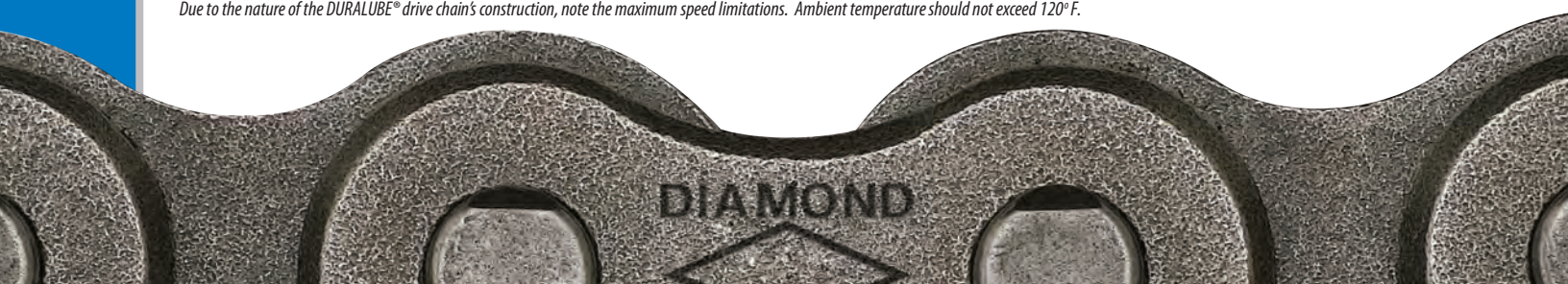
Dimensions in Inches

ASME/ANSI Number	Pitch Inches	Roller Width	Roller Diameter	Pin Diameter	Link Plate Thickness	C	R	K	Pounds Per Foot	Average Tensile Strength	Maximum Axle Speed	E*	H*
40-DL	1/2	5/16	.312	.156	.060	0.72	0.67	0.40	3300	1300 ft/min	.410	.475
40-2-DL	1/2	5/16	.312	.156	.060	1.29	1.24	0.566	0.81	6600	1300 ft/min	.410	.475
50-DL	5/8	3/8	.400	.200	.080	0.89	0.83	0.65	5200	1000 ft/min	.512	.594
50-2-DL	5/8	3/8	.400	.200	.080	1.60	1.55	0.713	1.27	10400	1000 ft/min	.512	.594
60-DL	3/4	1/2	.469	.234	.094	1.11	1.04	0.95	7400	850 ft/min	.615	.713
60-2-DL	3/4	1/2	.469	.234	.094	2.01	1.94	0.897	1.85	14800	850 ft/min	.615	.713
80-DL	1	5/8	.625	.312	.125	1.44	1.32	1.60	13000	650 ft/min	.820	.950
2040-DL	1	5/16	.312	.156	.060	0.76	0.68	0.30	3300	600 ft/min475
2050-DL	1 1/4	3/8	.400	.200	.080	0.92	0.84	0.47	5200	600 ft/min594
2060-DL	1 1/2	1/2	.469	.234	.094	1.11	1.05	0.70	7400	600 ft/min712

* Maximum values are shown.

Due to the nature of the DURALUBE® drive chain's construction, note the maximum speed limitations. Ambient temperature should not exceed 120° F.

MAINTENANCE FREE SERIES CHAIN

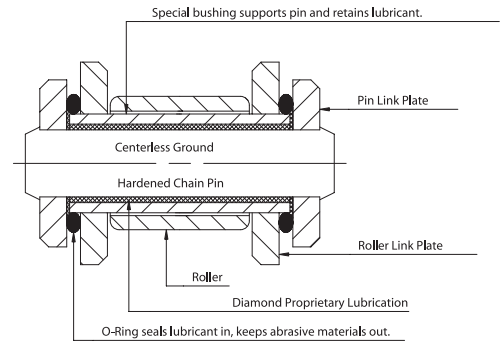
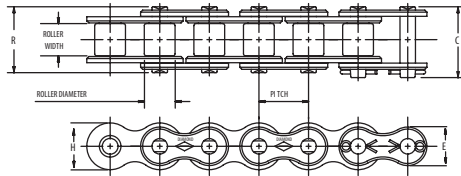


NOTHING OUTLASTS A DIAMOND.®



RING LEADER® O-RING DRIVE CHAIN

Diamond Chain Ring Leader O-Ring Series Chains are specifically intended for applications in which regular lubrication is not possible. Ring Leader O-Ring Series Chains are constructed with rings that seal Diamond Chain's proprietary lubricant in and keeps contaminants out.



Dimensions in Inches

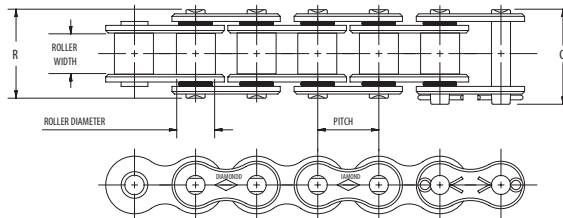
ASME/ANSI Number	Pitch Inches	Roller Width	Roller Diameter	Pin Diameter	Link Plate Thickness	C	R	Pounds Per Foot	Average Tensile Strength	E*	H*
50 XLO	5/8	3/8	.400	.200	.080	0.95	0.89	0.72	6500	.512	.594
50H XLO	5/8	3/8	.400	.214	.094	1.02	0.96	0.93	9300	.512	.594
60 XLO	3/4	1/2	.469	.234	.094	1.21	1.13	1.01	7700	.615	.713
80 XLO	1	5/8	.625	.312	.125	1.51	1.41	1.77	13500	.820	.950
100 XLO	1 1/4	3/4	.750	.375	.156	1.83	1.74	2.55	22000	1.025	1.188
120 XLO	1 1/2	1	.875	.437	.187	2.24	2.12	3.76	30000	1.230	1.425
140 XLO	1 3/4	1	1.000	.500	.219	2.49	2.35	5.10	42000	1.435	1.663
160 XLO	2	1 1/4	1.125	.562	.250	2.96	2.82	6.66	52000	1.640	1.900
C2050 XLO	1 1/4	3/8	.400	.200	.080	0.95	0.89	0.59	6500594
C2060H XLO	1 1/2	1/2	.469	.234	.125	1.27	1.21	1.17	7700712

* Maximum values are shown.

Note: Standard RING LEADER O-Ring chain can routinely operate in ambient temperatures up to 150°F. For higher temperature requirements, special O-rings can be substituted, allowing operation in temperatures of 400°F or greater.

DUST STOPPER™ DRIVE CHAIN

Diamond Chain Dust Stopper Series Chains are specifically intended for applications that require the functionality of both the DURALUBE and Ring Leader O-Ring drive chain.



Dimensions in Inches

ASME/ANSI Number	Pitch Inches	Roller Width	Roller Diameter	Pin Diameter	Link Plate Thickness	C	R	Pounds Per Foot	Average Tensile Strength	Max. Speed ft/min	E*	H*
40 XDLO	1/2	5/16	.312	.156	.060	0.78	0.73	0.43	3300	1300 ft/min	0.410	0.475
50 XDLO	5/8	3/8	.400	.200	.080	0.95	0.59	0.68	5200	1000 ft/min	0.512	0.594
60 XDLO	3/4	1/2	.469	.234	.094	1.21	1.13	0.95	7400	850 ft/min	0.615	0.713
80 XDLO	1	5/8	.625	.312	.125	1.51	1.41	1.59	13000	650 ft/min	0.820	0.950

* Maximum values are shown.

Due to the nature of the DUST STOPPER® drive chain's construction, note the maximum speed limitations. Ambient temperature should not exceed 120°F.

MAINTENANCE FREE - CHAIN DESCRIPTIONS AND DIMENSIONS

For more information on the Diamond Chain Company, its products, and its services, please visit us at www.diamondchain.com or by calling 1-800-872-4246.